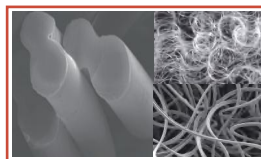




SORONA® FIBER BALL







DPZ-HTD



Natural3D Spiral Structure



Bio-Based Heat Storage Thermal Insulation

-  **Renewably Bio-based, ECO-Friendly**
-  Sorona® heat storage insulation combined with bio-based fiber and Sofeelate® heat storage insulation material together.
-  Light energy such as infrared rays can be efficiently absorbed and converted which is in order to achieve a high efficiency of heating effects. Sorona® insulation is made in part with plant-based ingredients, featuring with extremely soft hand feeling. Sorona® Aura helps reduce our dependence on oil and petrochemicals and shrinks our environmental footprint.
-  **Puffy & Soft , Warmth Upgraded**
-  DPZ-HTD, cloud-shaped fiber ball, heating up fast. Infrared rays can be efficiently absorbed and converted.
-  With extremely soft and fine hand feeling. Maintain a long-lasting shape. Suitable for conventional fabrics.

特点 (FEATURES)	参考数据 (DATA)
纤维成份 Component	100% Polyester
蓬松度 Filling power	405 in ³ /30g
保暖值 Clo value	2.95 Clo (200gsm)
绗缝间距 Quilting	5-12 cm
透气性 Breathability	Breathable Warmth & Increased Comfort
耐水洗性 Wash durability	Remain Uniform After Laundering
使用指导 Instruction	It is recommended to use after 24 hours opening the package.
相关认证 Certification	

The above data are tested by internal and third-party test institutions and are for reference only.



BIO-BASED



PUFFY & SOFT



WARMER

SHANGHAI SHUOTE NONWOVENS CO., LTD
WWW.CHINASTWF.CN

